
Instructional Scheduling Assistant (ISA)

June 20, 2017

Introductions

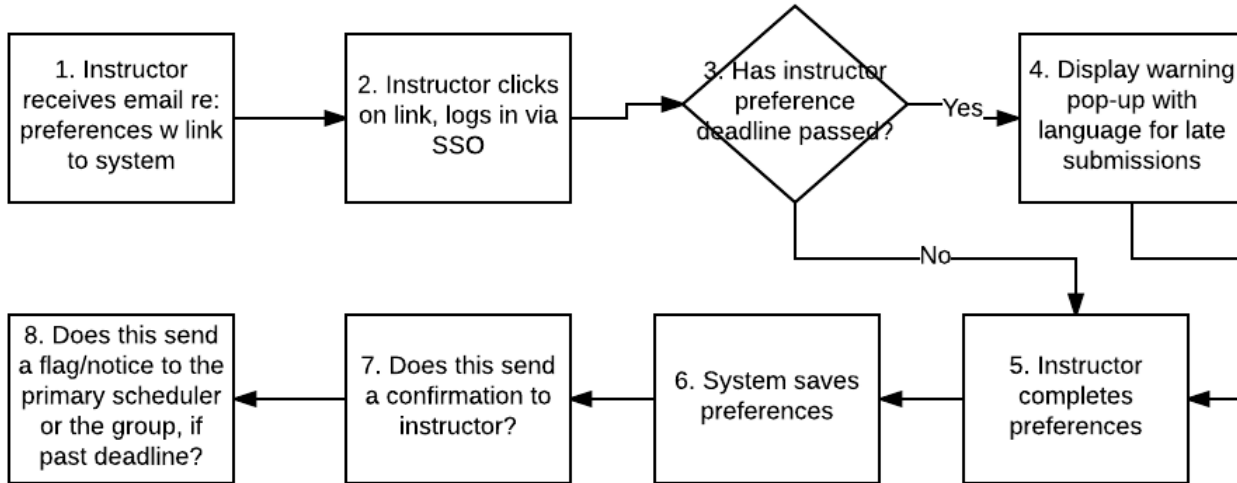
- New Advisory Committee member, Christy Silloway (Sociology)



Workflows

- Instructor Preferences
 - Teaching Acknowledgement
-

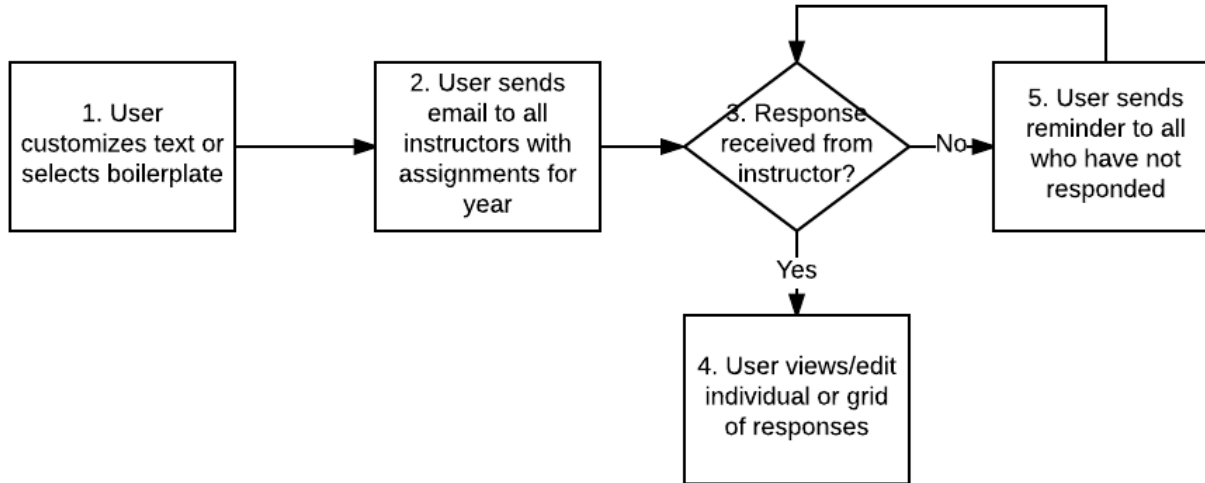
Workflows



Instructor Preferences - Admin. Process- Workflow

Last Updated 6-8-17

Workflows



Teaching Acknowledgements Workflow

Last Updated 6-8-17

Email Notification Questions

- Should there be a notification sent to scheduler/advising group once an instructor submits their preferences/acknowledgement?
 - Initial
 - After deadline

 - Individual or group email?
-

Email Wording

- Teaching Acknowledgement
 - Initial
 - Reminder
 - Post-Deadline
 - Instructor Preferences
 - Initial
 - Reminder
 - Post-Deadline
-

Demo - Copy Schedule functionality

Teaching Load/ Credits

- When instructors have joint appointments, how does that affect their teaching load and how you calculate their teaching credits?
 - Do classes taught in an academic program (e.g., writing programs) count towards your department's load requirement?
 - Sabbatical Credits vs. Teaching Credits
-

Upcoming Meetings

Thursday, July 27 in 111A:

9 am: Advisory Committee

10 am: Bring a friend! Full demo

THANK YOU!

IMS Champions

- IMSChampions are helping to promote IMSto their peers and train their colleagues

 - Who are the IMSChampions?
 - Elisa Suter, Psychology
 - Kate Edwards, Visual Arts
 - Dawn Blessman, Division of Biological Sciences
 - Jessica Pham, Rady School of Management
 - Anju Shimura, Rady School of Management
-