

10000 - ACADEMIC AFFAIRS

Employee Effectiveness and Satisfaction - Scores by Question

UCSD STAFF @ WORK SURVEY: 2011

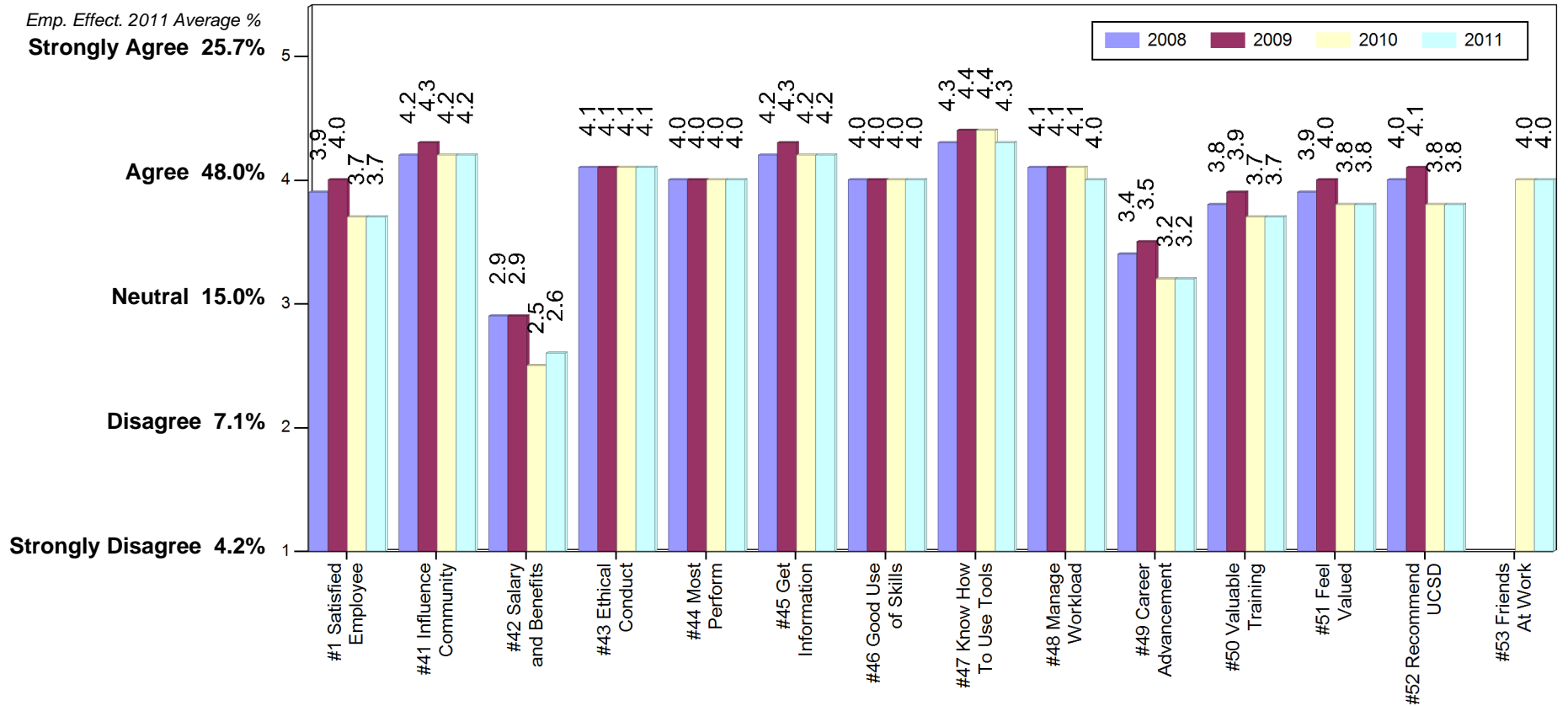


Percent Evaluating:

	Responded/Invited		Overall Average	Overall Top/Bottom Ratio
2011	n/N = 1149/2086	55%	3.9	6
2010	n/N = 1040/2182	48%	3.9	6
2009	n/N = 1002/2211	45%	4.0	8
2008	n/N = 1019/2187	47%	3.9	7

Top/Bottom 2-Box Ratio:

2011	6	27	1	22	15	31	8	219	15	2	6	6	8	15
2010	5	25	0	22	15	34	7	123	15	2	7	6	8	15
2009	10	41	1	24	14	48	9	137	26	3	11	8	16	*
2008	9	36	1	18	14	37	7	121	18	3	9	7	12	*



10000 - ACADEMIC AFFAIRS

Leadership Effectiveness - Scores by Question

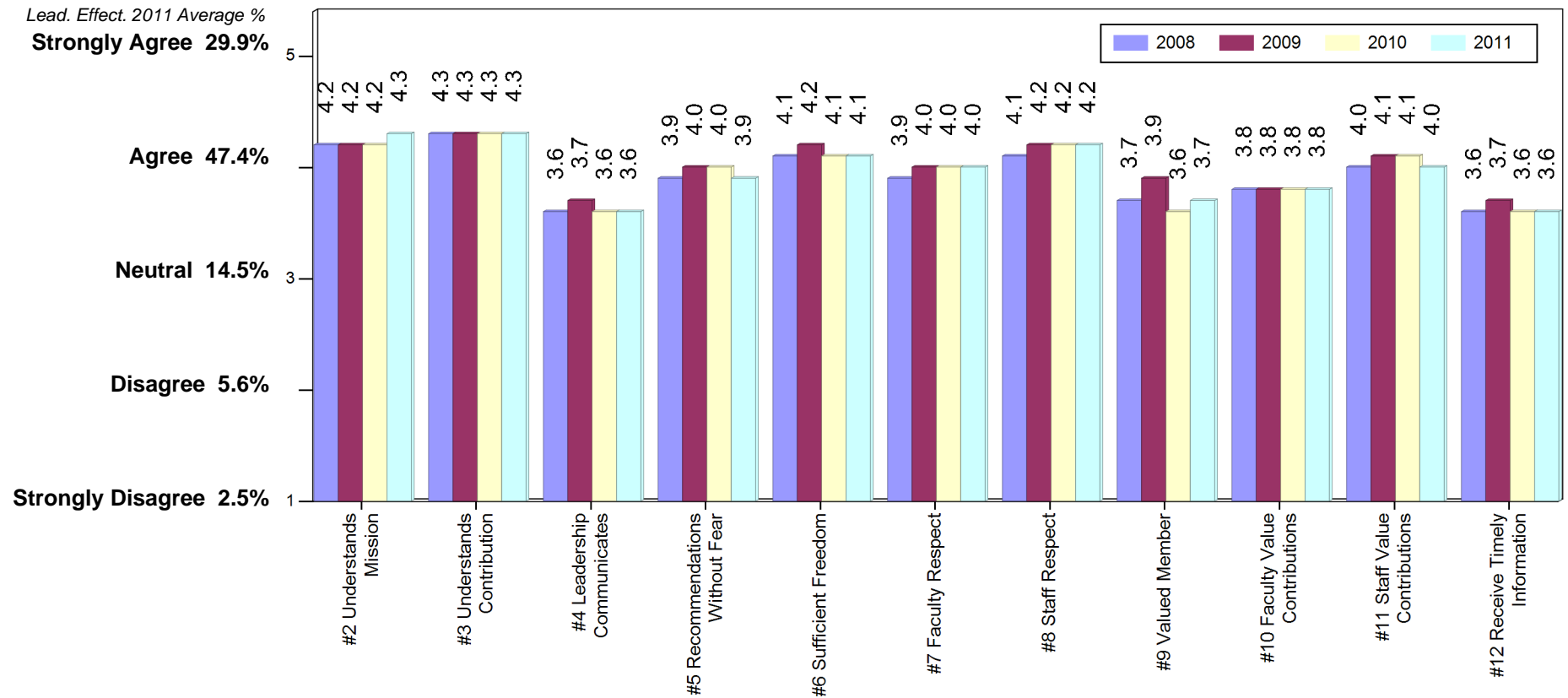
UCSD STAFF @ WORK SURVEY: 2011



<u>Percent Evaluating:</u>	Responded/Invited		Overall Average	Overall Top/Bottom Ratio
2011	n/N = 1149/2086	55%	3.9	6
2010	n/N = 1040/2182	48%	3.9	6
2009	n/N = 1002/2211	45%	4.0	8
2008	n/N = 1019/2187	47%	3.9	7

Top/Bottom 2-Box Ratio:

2011	28	28	3	6	12	15	27	5	9	28	4
2010	19	20	3	6	10	10	29	4	8	28	4
2009	16	21	4	7	13	11	29	10	8	21	6
2008	19	25	3	6	11	10	18	6	8	19	4



10000 - ACADEMIC AFFAIRS

Department Effectiveness - Scores by Question (Page 1)

UCSD STAFF @ WORK SURVEY: 2011



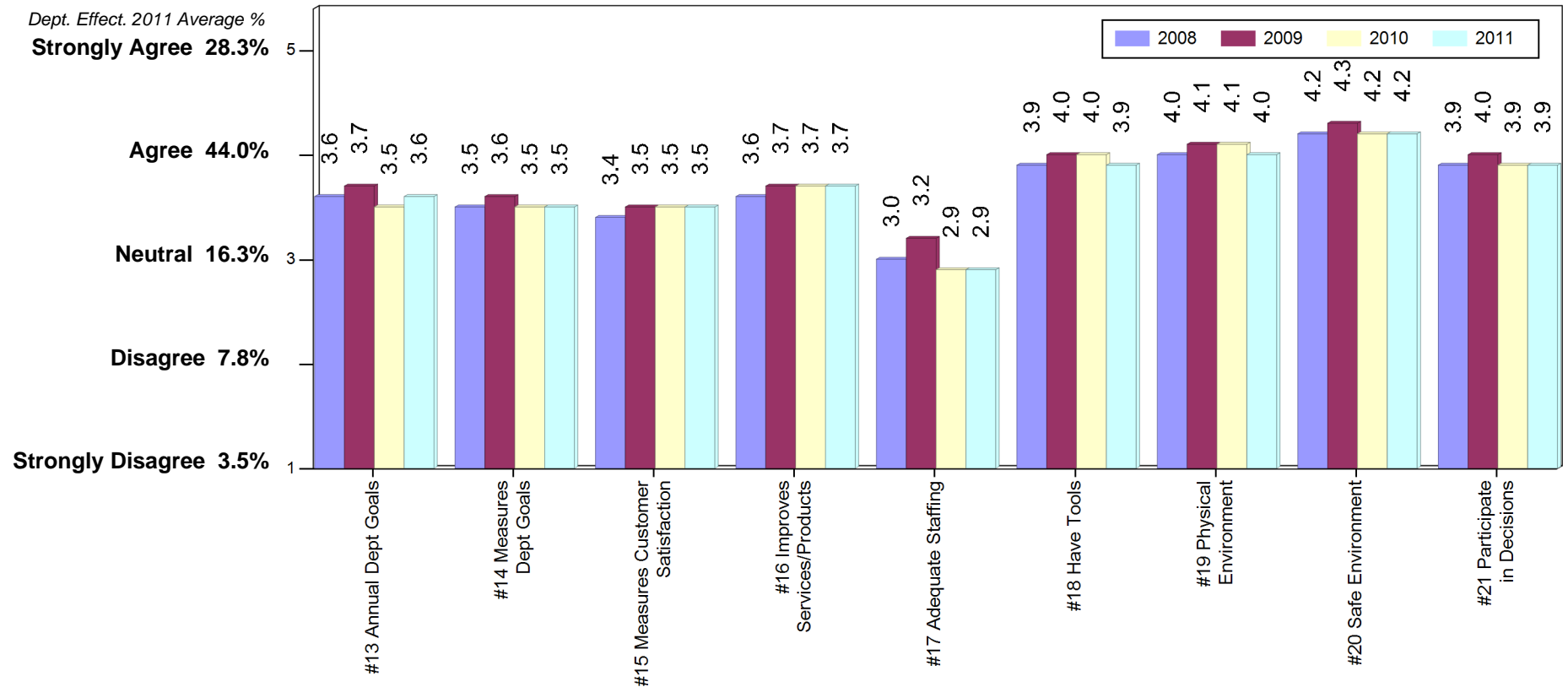
Percent Evaluating:

	Responded	Invited	
2011	n/N = 1149/2086	55%	
2010	n/N = 1040/2182	48%	
2009	n/N = 1002/2211	45%	
2008	n/N = 1019/2187	47%	

Overall Average	Overall Top/Bottom Ratio
3.9	6
3.9	6
4.0	8
3.9	7

Top/Bottom 2-Box Ratio:

2011	3	3	3	4	1	8	11	23	7
2010	3	3	3	4	1	11	13	28	7
2009	4	3	3	5	2	11	15	37	9
2008	4	3	3	4	1	9	10	31	6



10000 - ACADEMIC AFFAIRS

Department Effectiveness - Scores by Question (Page 2)

UCSD STAFF @ WORK SURVEY: 2011



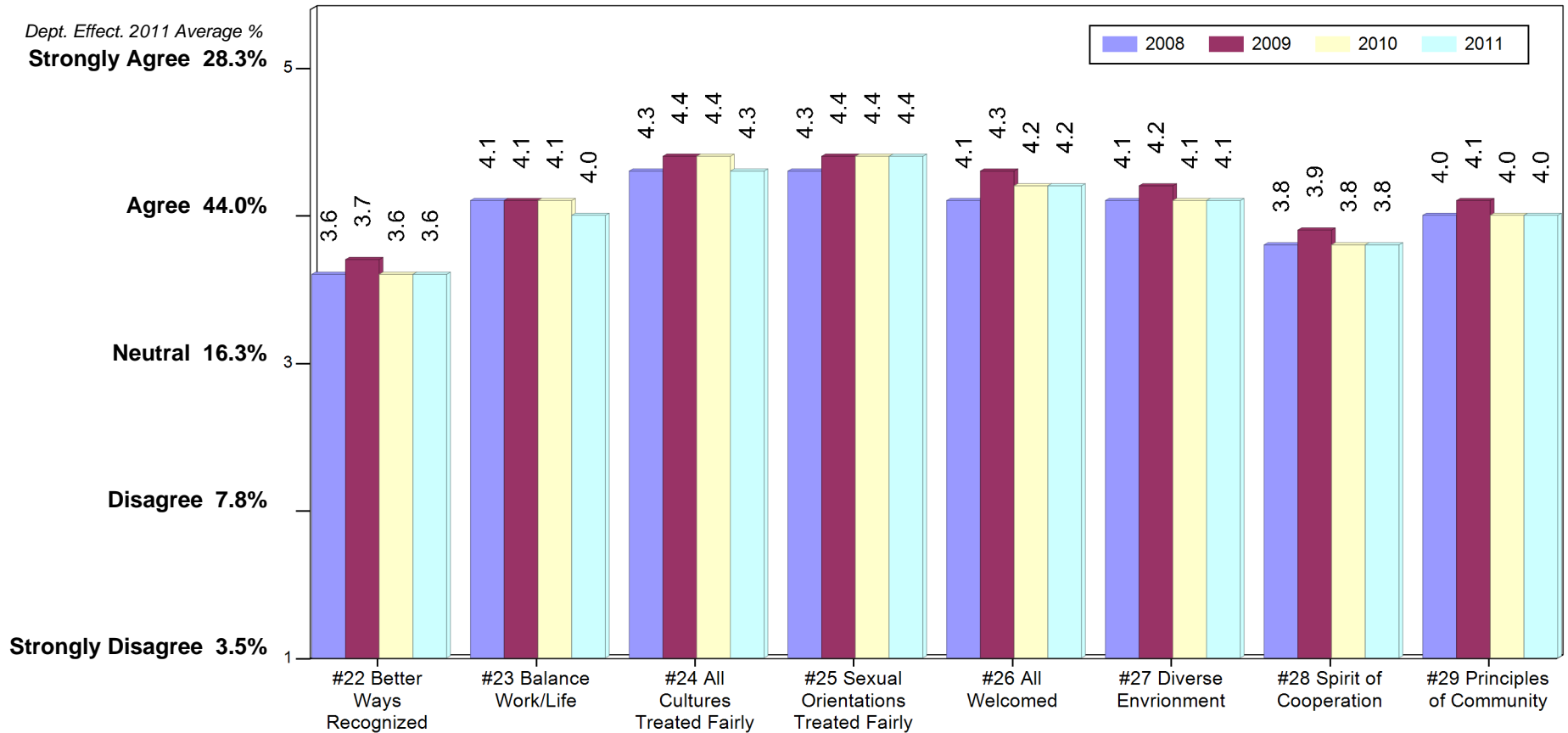
Percent Evaluating:

	Responded/Invited	
2011	n/N = 1149/2086	55%
2010	n/N = 1040/2182	48%
2009	n/N = 1002/2211	45%
2008	n/N = 1019/2187	47%

Overall Average	Overall Top/Bottom Ratio
3.9	6
3.9	6
4.0	8
3.9	7

Top/Bottom 2-Box Ratio:

2011	4	10	23	55	20	27	6	15
2010	4	9	22	40	21	25	6	14
2009	5	11	31	59	44	30	7	15
2008	4	10	19	34	21	23	5	12



10000 - ACADEMIC AFFAIRS

Supervisor Effectiveness - Scores by Question

UCSD STAFF @ WORK SURVEY: 2011



Percent Evaluating:

	Responded/Invited	
2011	n/N = 1149/2086	55%
2010	n/N = 1040/2182	48%
2009	n/N = 1002/2211	45%
2008	n/N = 1019/2187	47%

	Overall Average	Overall Top/Bottom Ratio
2011	3.9	6
2010	3.9	6
2009	4.0	8
2008	3.9	7

Top/Bottom 2-Box Ratio:

2011	3	3	7	6	8	4	7	10	15	20	3
2010	3	3	7	6	8	4	7	9	15	22	3
2009	3	5	9	7	10	5	10	15	18	33	5
2008	4	4	7	7	10	5	8	12	14	24	3

