

University of California, San Diego

Employee Effectiveness and Satisfaction - Scores by Question

UCSD STAFF @ WORK SURVEY: 2014



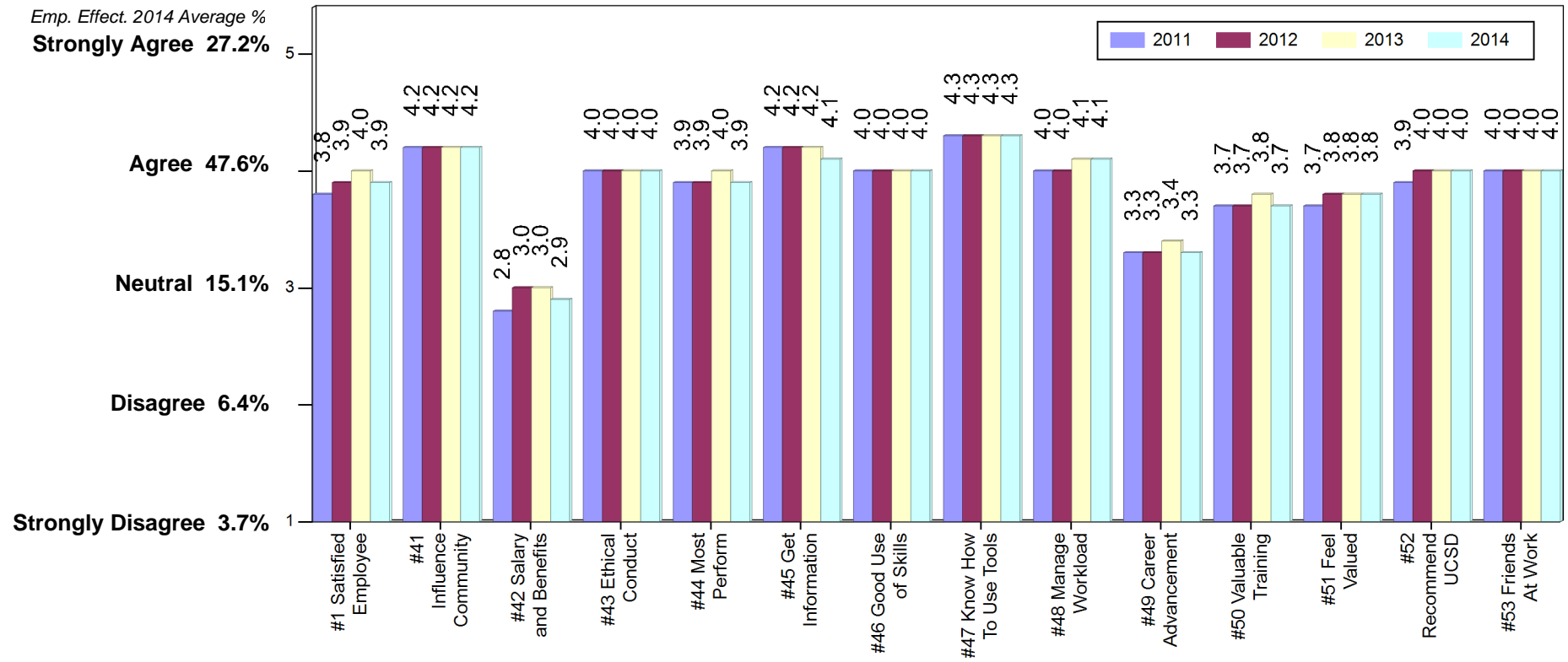
Percent Evaluating:

| | Responded/Invited | | |
|------|-------------------|-----|--|
| 2014 | n/N = 4608/8634 | 53% | |
| 2013 | n/N = 4543/8488 | 54% | |
| 2012 | n/N = 4735/8421 | 56% | |
| 2011 | n/N = 4776/8446 | 57% | |

| | Overall Average | Overall Top/Bottom Ratio |
|------|-----------------|--------------------------|
| 2014 | 3.9 | 7 |
| 2013 | 3.9 | 7 |
| 2012 | 3.9 | 7 |
| 2011 | 3.8 | 6 |

Top/Bottom 2-Box Ratio:

| | | | | | | | | | | | | | | |
|------|----|----|---|----|----|----|----|----|----|---|---|---|----|----|
| 2014 | 10 | 31 | 1 | 14 | 11 | 25 | 10 | 88 | 15 | 2 | 7 | 6 | 12 | 13 |
| 2013 | 10 | 36 | 1 | 15 | 12 | 37 | 10 | 82 | 15 | 2 | 8 | 6 | 12 | 13 |
| 2012 | 9 | 30 | 1 | 14 | 10 | 24 | 9 | 79 | 13 | 2 | 7 | 5 | 10 | 13 |
| 2011 | 6 | 29 | 1 | 12 | 9 | 28 | 9 | 97 | 12 | 2 | 6 | 5 | 8 | 14 |



All Leadership Effectiveness - Scores by Question

UCSD STAFF @ WORK SURVEY: 2014



Percent Evaluating:

| | Responded/Invited | |
|------|-------------------|-----|
| 2014 | n/N = 4608/8634 | 53% |
| 2013 | n/N = 4543/8488 | 54% |
| 2012 | n/N = 4735/8421 | 56% |
| 2011 | n/N = 4776/8446 | 57% |

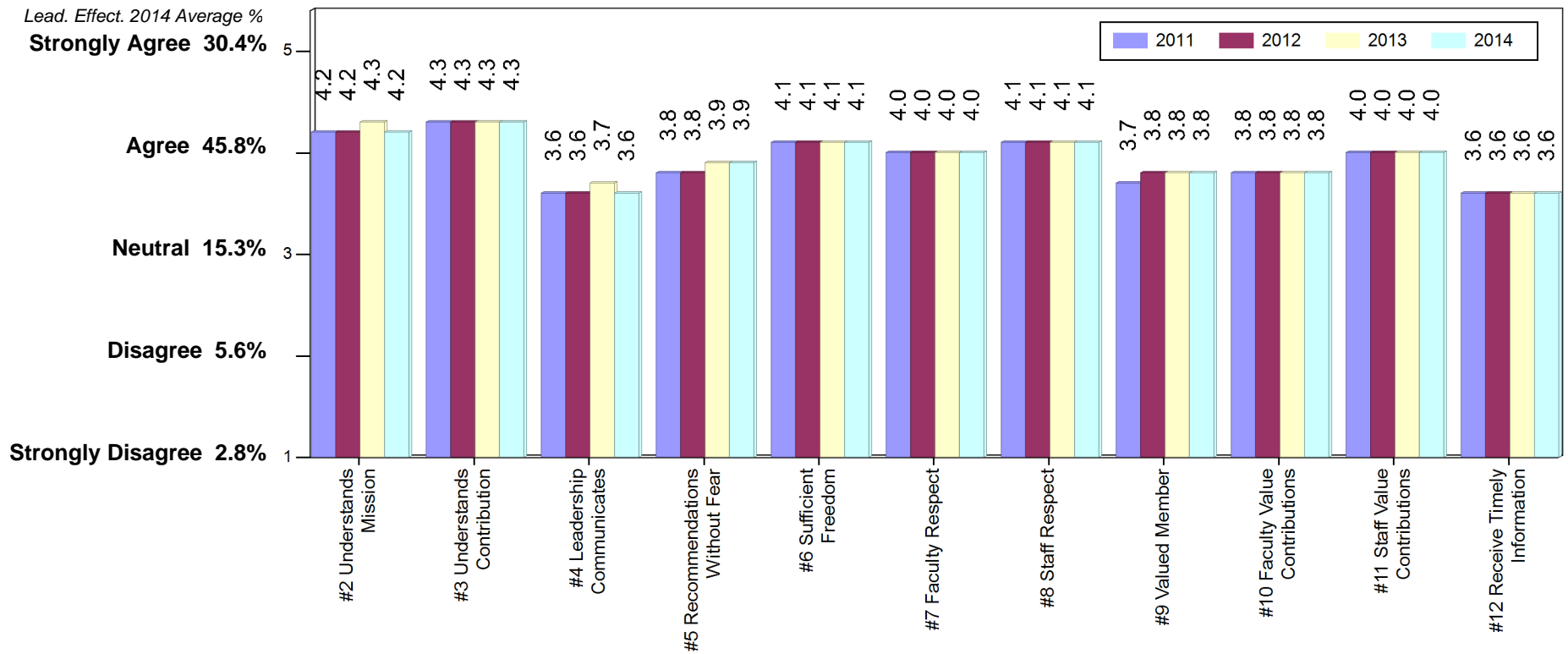
| Overall Average | Overall Top/Bottom Ratio |
|-----------------|--------------------------|
| 3.9 | 7 |
| 3.9 | 7 |
| 3.9 | 7 |
| 3.8 | 6 |

Top/Bottom 2-Box Ratio:

| | | | | | | | | | | | |
|------|----|----|---|---|----|----|----|---|----|----|---|
| 2014 | 19 | 29 | 3 | 6 | 12 | 15 | 20 | 7 | 10 | 18 | 4 |
| 2013 | 25 | 24 | 4 | 6 | 12 | 15 | 21 | 7 | 9 | 19 | 4 |
| 2012 | 19 | 23 | 3 | 5 | 9 | 13 | 21 | 6 | 8 | 16 | 4 |
| 2011 | 22 | 24 | 3 | 5 | 10 | 12 | 20 | 5 | 8 | 17 | 4 |

Lead. Effect. 2014 Average %

Strongly Agree 30.4%



Strongly Disagree 2.8%

Disagree 5.6%

Neutral 15.3%

Agree 45.8%

5

4

3

2

1

All Department Effectiveness - Scores by Question (Page 1)

UCSD STAFF @ WORK SURVEY: 2014



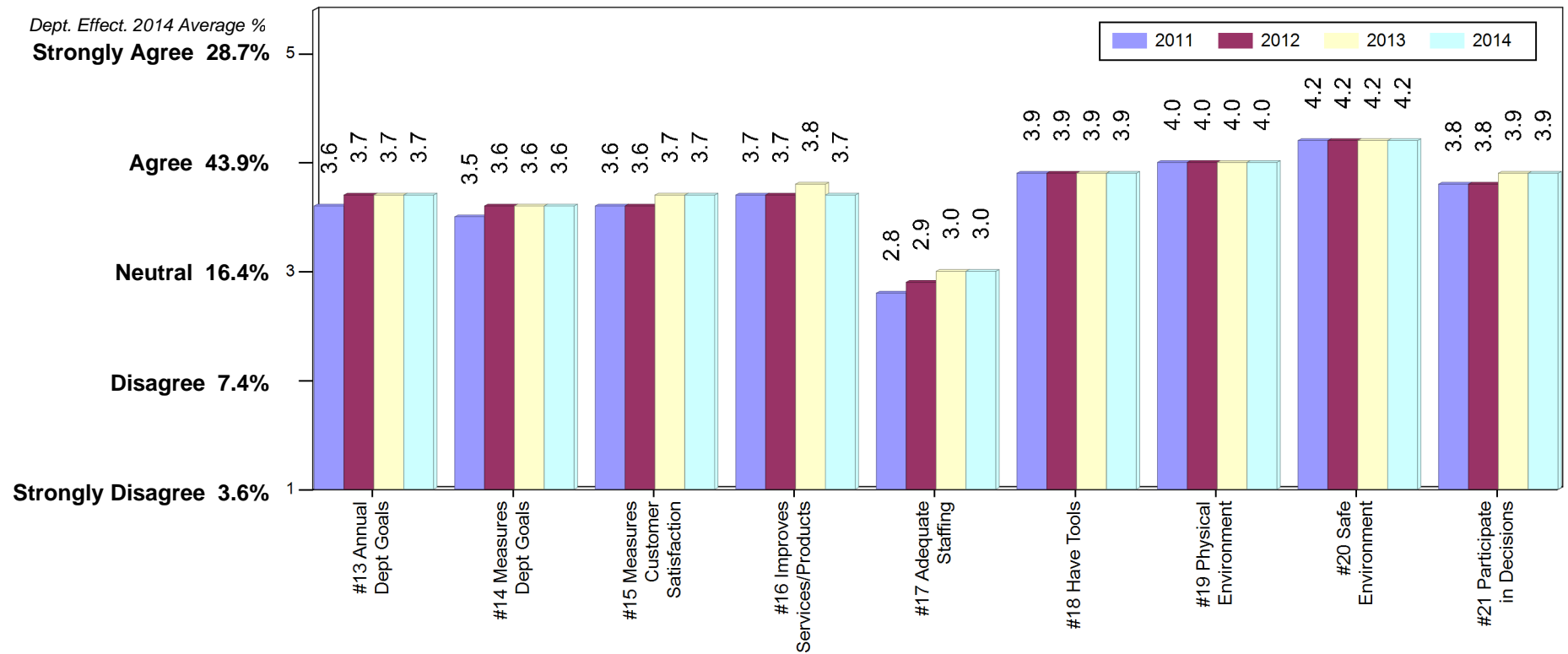
Percent Evaluating:

| | Responded/Invited | |
|------|-------------------|-----|
| 2014 | n/N = 4608/8634 | 53% |
| 2013 | n/N = 4543/8488 | 54% |
| 2012 | n/N = 4735/8421 | 56% |
| 2011 | n/N = 4776/8446 | 57% |

| Overall Average | Overall Top/Bottom Ratio |
|-----------------|--------------------------|
| 3.9 | 7 |
| 3.9 | 7 |
| 3.9 | 7 |
| 3.8 | 6 |

Top/Bottom 2-Box Ratio:

| | | | | | | | | | |
|------|---|---|---|---|---|---|----|----|---|
| 2014 | 4 | 4 | 5 | 5 | 1 | 9 | 11 | 20 | 7 |
| 2013 | 5 | 4 | 5 | 6 | 1 | 9 | 12 | 21 | 7 |
| 2012 | 4 | 4 | 4 | 5 | 1 | 8 | 10 | 19 | 6 |
| 2011 | 4 | 3 | 4 | 4 | 1 | 8 | 10 | 18 | 6 |



All Department Effectiveness - Scores by Question (Page 2)

UCSD STAFF @ WORK SURVEY: 2014



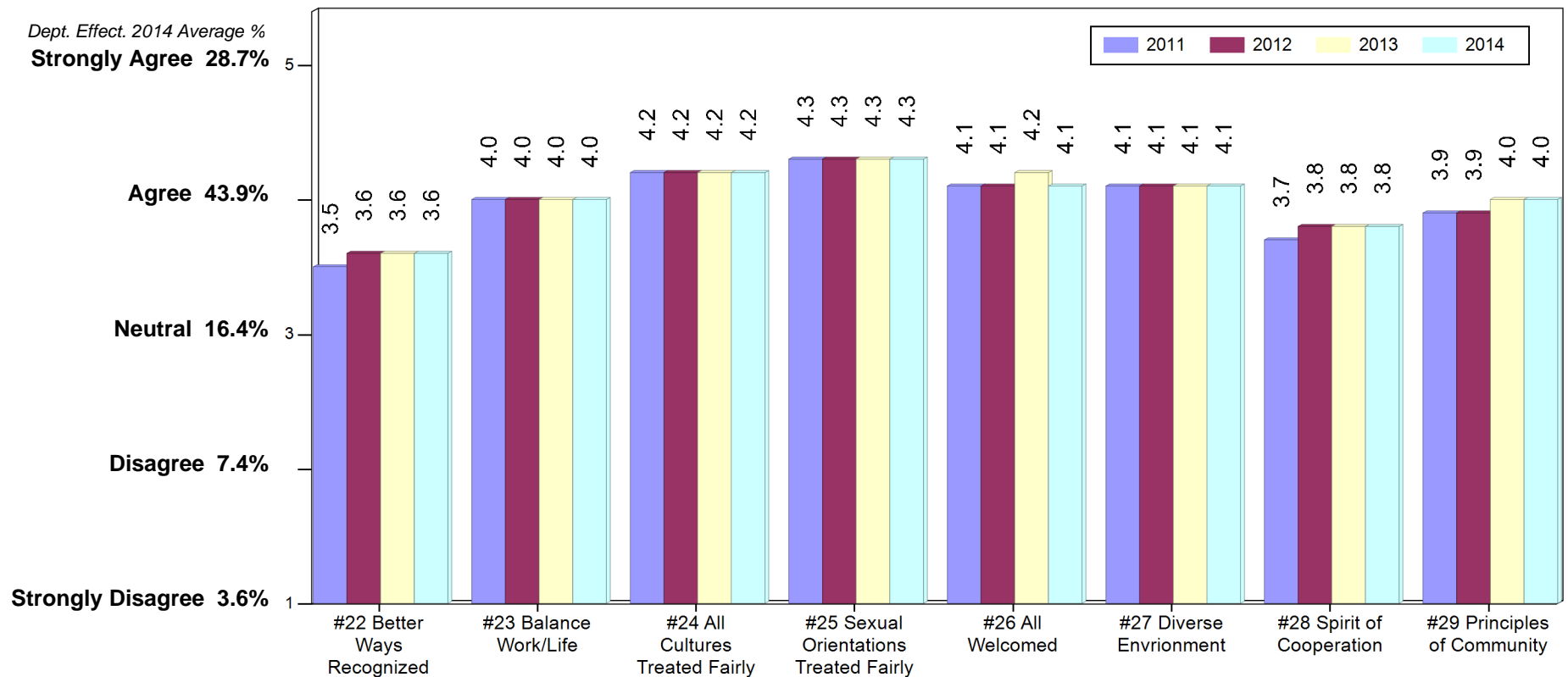
Percent Evaluating:

| | Responded/Invited | |
|------|-------------------|-----|
| 2014 | n/N = 4608/8634 | 53% |
| 2013 | n/N = 4543/8488 | 54% |
| 2012 | n/N = 4735/8421 | 56% |
| 2011 | n/N = 4776/8446 | 57% |

| Overall Average | Overall Top/Bottom Ratio |
|-----------------|--------------------------|
| 3.9 | 7 |
| 3.9 | 7 |
| 3.9 | 7 |
| 3.8 | 6 |

Top/Bottom 2-Box Ratio:

| | | | | | | | | |
|------|---|----|----|----|----|----|---|----|
| 2014 | 4 | 9 | 14 | 36 | 19 | 20 | 5 | 12 |
| 2013 | 4 | 10 | 17 | 38 | 21 | 24 | 6 | 12 |
| 2012 | 4 | 8 | 13 | 27 | 17 | 18 | 5 | 10 |
| 2011 | 3 | 8 | 12 | 26 | 15 | 19 | 5 | 9 |



All Supervisor Effectiveness - Scores by Question

UCSD STAFF @ WORK SURVEY: 2014



Percent Evaluating:

| | Responded/Invited | |
|------|-------------------|-----|
| 2014 | n/N = 4608/8634 | 53% |
| 2013 | n/N = 4543/8488 | 54% |
| 2012 | n/N = 4735/8421 | 56% |
| 2011 | n/N = 4776/8446 | 57% |

| Overall Average | Overall Top/Bottom Ratio |
|-----------------|--------------------------|
| 3.9 | 7 |
| 3.9 | 7 |
| 3.9 | 7 |
| 3.8 | 6 |

Top/Bottom 2-Box Ratio:

| | | | | | | | | | | | |
|------|---|---|---|---|---|---|---|---|----|----|---|
| 2014 | 3 | 4 | 7 | 6 | 8 | 4 | 6 | 8 | 14 | 20 | 3 |
| 2013 | 3 | 4 | 7 | 6 | 8 | 5 | 7 | 9 | 13 | 20 | 4 |
| 2012 | 3 | 3 | 6 | 6 | 7 | 4 | 6 | 8 | 12 | 17 | 3 |
| 2011 | 3 | 3 | 5 | 5 | 6 | 4 | 5 | 7 | 11 | 15 | 3 |

