



Bachelor of Science in Public Health

Program Directors: Cheryl Anderson & Simon Marshall

Department of Family & Preventive Medicine

UCSD School of Medicine

November 5, 2013

What is Public Health?

- Public health seeks to improve human health through the development and application of knowledge that helps:
 - promotes health, prevent disease
 - protect the public from exposure to potential harm
 - prevent health care inequalities
at a local, state, national and global level

Top Public Health Achievements of the 20th Century in the US*

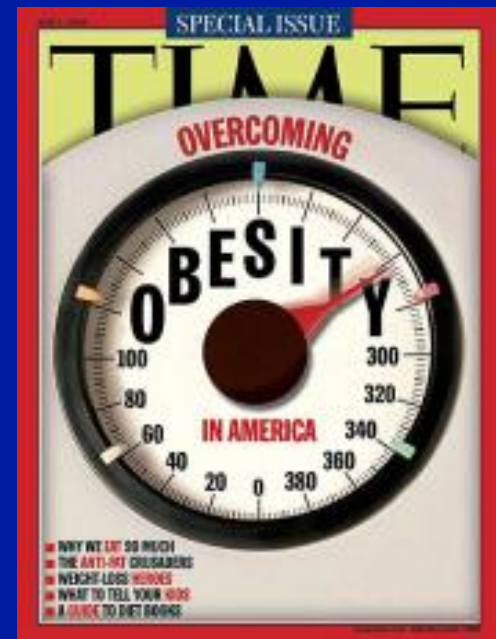
Top 10 Achievements in Public Health



1. Vaccination
2. Motor-vehicle safety
3. Safer workplaces
4. Control of infectious diseases
5. Decline in deaths from coronary heart disease and stroke
6. Safer and healthier foods
7. Healthier mothers and babies
8. Family planning
9. Fluoridation of drinking water
10. Recognition of tobacco use as a health hazard

Why Public Health?

- Address some of the most pressing issues of the 21st century



Why Public Health?

- Learn critical thinking and evaluation skills
- Receive training that prepares students for:
 - Public health jobs
 - Public health graduate programs
 - Medical school (MCAT 2015) & other health programs
 - Other graduate schools (e.g. law, business)

What is the framework?

Competencies:

A unique set of applied knowledge, skills, and other attributes (KSO's), grounded in theory and evidence, for the broad practice of public health.

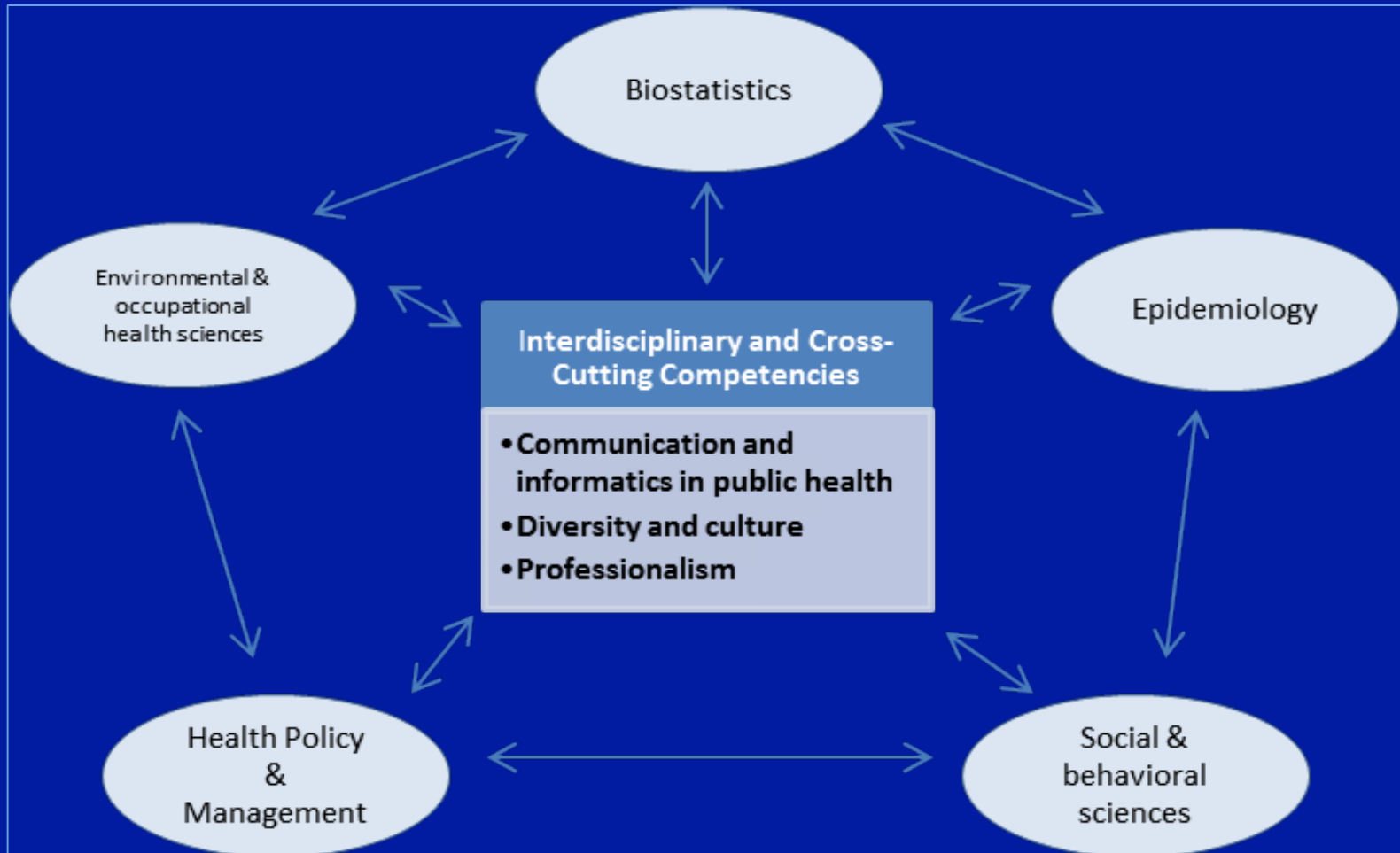
(ASPH, 2004)

Upon graduation a student from UCSD with a BSPH should be able to....

Why are competencies important?

- Focus on outcomes of learning
- Sequenced and hierarchical (a 'mapquest' for learning)
- Represent what's needed for success in the workforce
- Derived by consensus of stakeholders in the discipline
- Required by public health programs seeking accreditation
- Determines what aspects of student learning need to be measured

Core Competency Model for UCSD BSPH

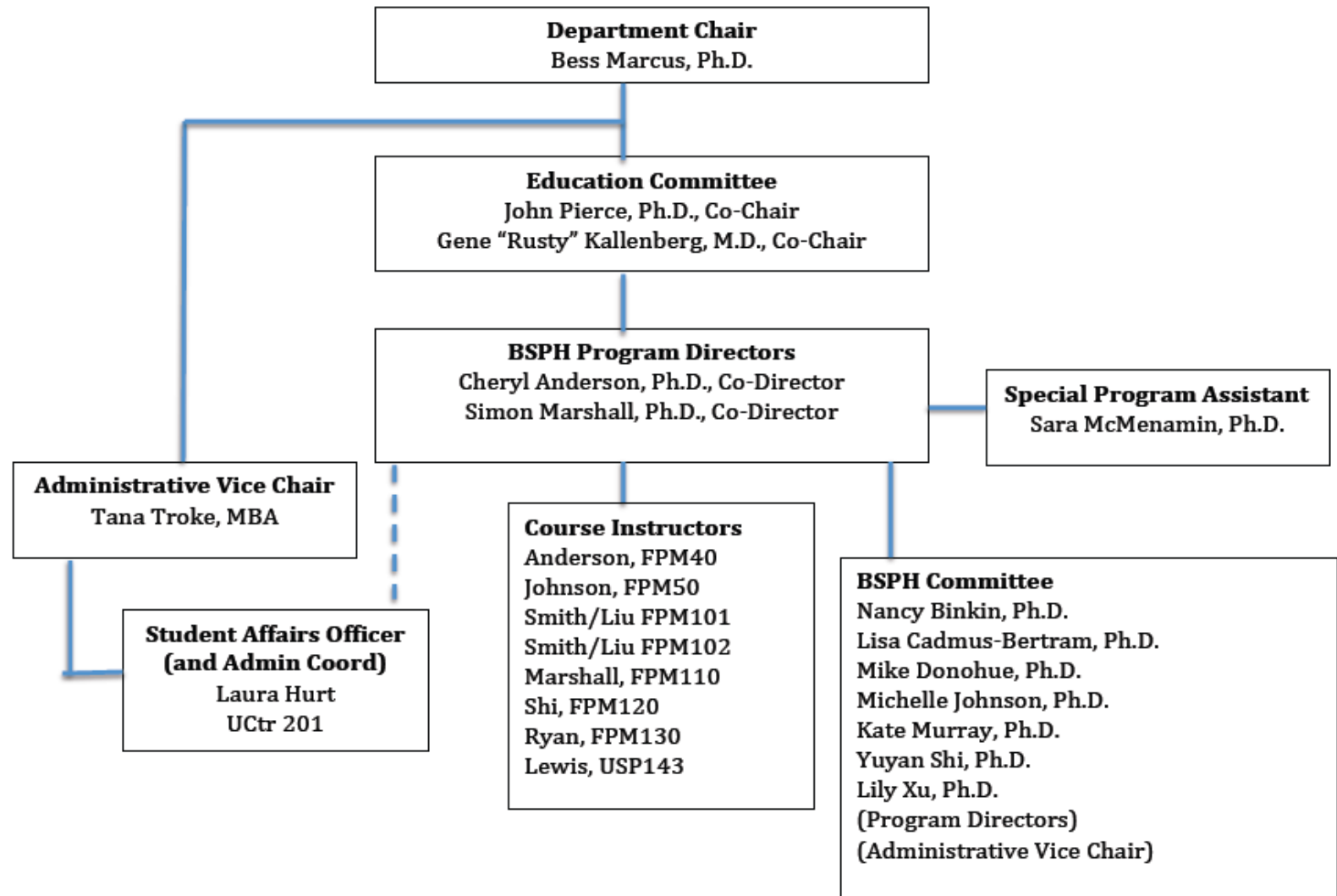


Lower Division Sequences in Biology, Quantitative Skills and Social Sciences are important prerequisites for a quality Public Health major

Overview of Public Health Major

- Start date: September 2013
- Dept. of Family & Preventive Medicine (FPM) in UCSD School of Medicine (SOM)
- Opportunities to have general public health major or to specialize in:
 1. Epidemiology/Biostatistics
 2. Social and behavioral sciences
 3. Health policy

BSPH Organizational Chart



Overview of Public Health Major

7 NEW courses taught by Dept of Family & Preventive Medicine (FPM):

1. Introduction to Public Health (FPM 40)
2. Primary Care and Public Health (FPM 50)
3. Epidemiology & Biostatistics A (FPM 101)
4. Epidemiology & Biostatistics B (FPM 102)
5. Health Behavior & Chronic Diseases (FPM 110)
6. Health Policies for Healthy Lifestyle (FPM 120)
7. Environmental & Occupational Health (FPM 130)

Relevant Courses Already Taught at UCSD

- Bioethics (4)
- Biostatistics (16)
- Disparities (9)
- Epidemiology (4)
- Environmental Sciences (5)
- Global Health related (12)
- Health Issues (11)
- Infectious disease (2)
- Lifestyle related (10)
- Policy related (8)
- Public Health Practice (4)
- Substance Use (3)

Lower Division Requirements

- Biology (12 units)
 - Option 1: BILD 1, BILD 2, and BILD 3
 - Option 2: BILD 3 PLUS two from BILD 12, BILD 20, BILD 26
- Quantitative Methods (at least 4 units)
 - Option 1: MATH 11 PLUS MATH 11L
 - Option 2: PSYCH 60

•
•

Lower Division Requirements (cont)

- Public Health Sciences (8 units)
 - FPM 40: Introduction to Public Health
 - FPM 50: Primary Care and Public Health

- Social and Behavioral Science Electives (12 units [at least two courses in one discipline])
 - ANTH 1, ANTH 23, SOCI 10, SOCI 40, PSYCH 4, PSYCH 6, ESYS 10, ENVIR 30, HILD 30

Upper Division Requirements

Core Disciplines (24 units) – All PH Majors

- Epidemiology and Biostatistics (2 courses, 8 units)
 - FPM 101: Epidemiology and Biostatistics A
 - FPM 102: Epidemiology and Biostatistics B
- Environmental/Occupational Health (1 course, 4 units)
 - FPM 130: Environmental and Occupational Health

Upper Division (cont.)

Core Disciplines (24 units) – All PH Majors

- Social and Behavioral Sciences (1 course, 4 units)
 - FPM 110: Health Behavior and Chronic Diseases
- Health Policy (2 courses, 8 units)
 - FPM 120: Health Policies for Healthy Lifestyles
 - USP 143: The US Health Care System

Upper Division (cont.)

Electives: 5 courses (24 units)

- If a student chooses one of the three specializations, taking at least 8 units from that particular specialization is recommended.
- **Epidemiology and Biostatistics Specialization**
 - BICD 136, BIMM 114, BIEB 100, MATH 111A, MATH 111B, MATH 181a, MATH 181B, MATH 181C, MATH 181E, MATH 183, MATH 186, ECON 120A, ECON 120B

Upper Division (cont.)

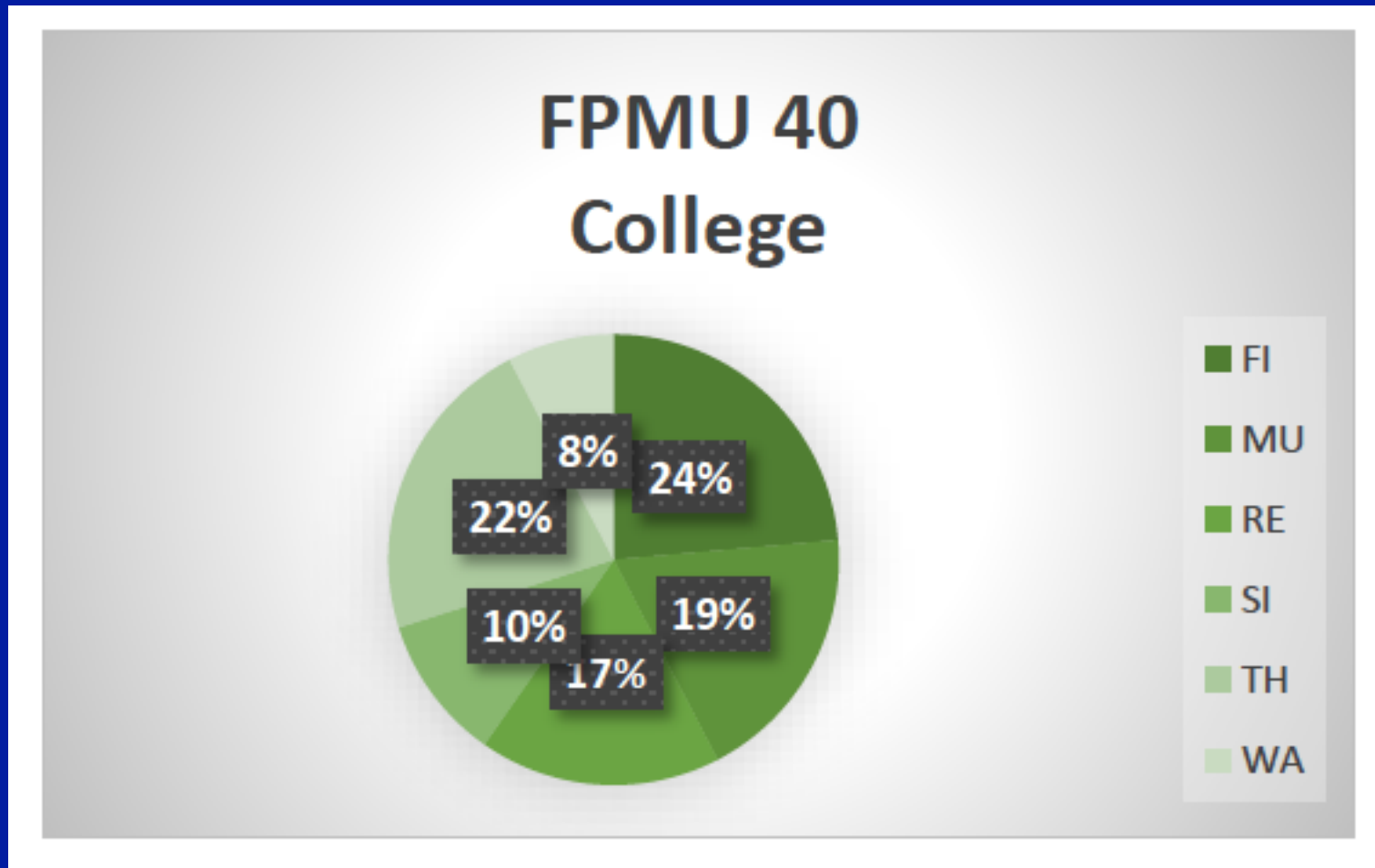
Electives (continued):

- Social and Behavioral Sciences Specialization
 - BIBC 120, BIPN 108, PSYCH 134, PSYCH 155, PSYCH 179, PSYCH 181, PSYCH 184, PSYCH 188, SOCI 137, SOCI 134, SOCI 136E, SOCI 136F, SOCI 137
- Health Policy Specialization
 - ECON 130, ECON 140, ECON 141, POLISCI 160AA, SOCI152

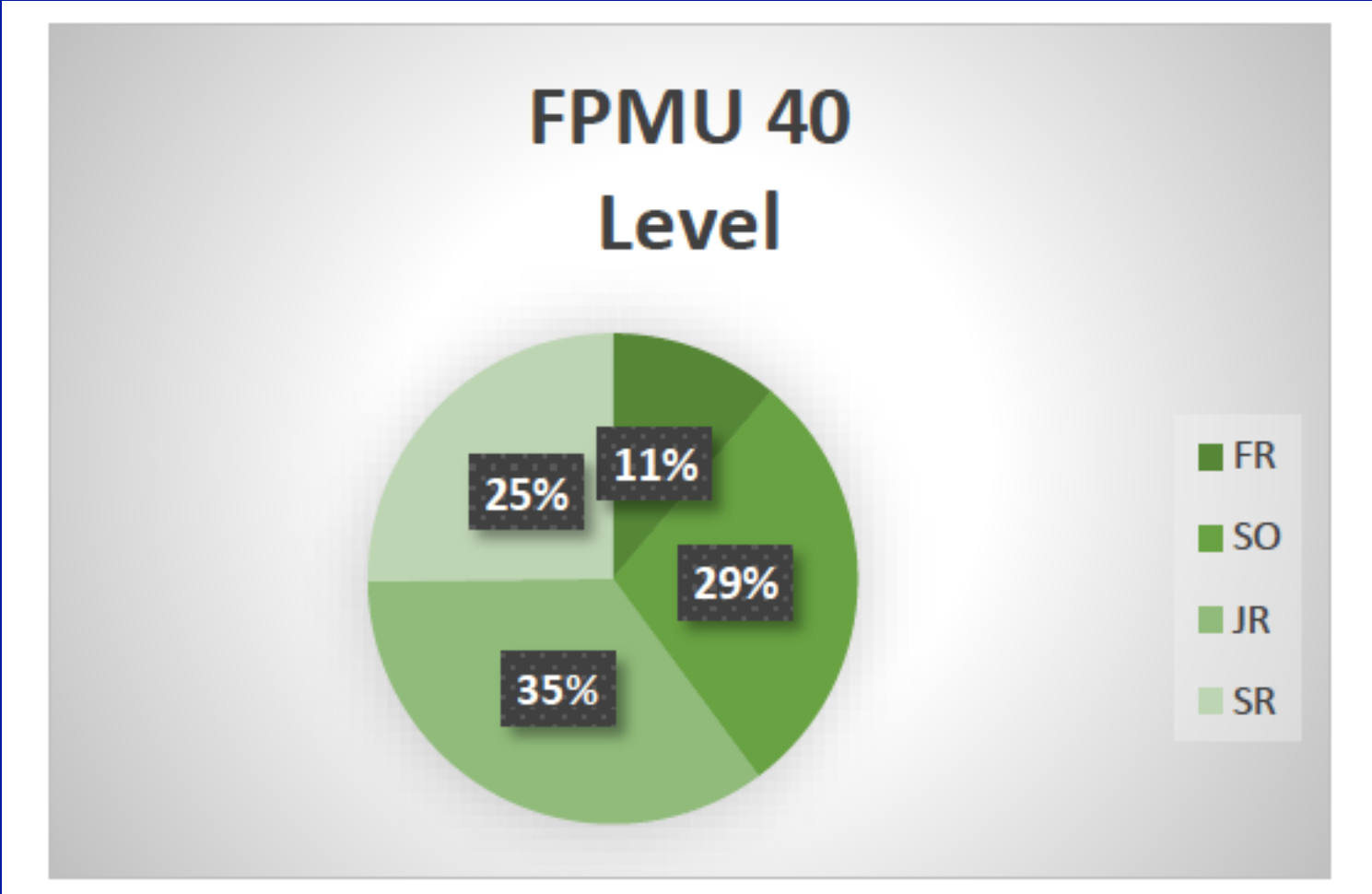
Upper Division (cont.)

- Other General Electives
 - ANSC 148, BICD 134, COCU 170, ENVIR 130, ETHN 103, ETHN 142, ETHN 183, ETHN 185, ETHN 190, HDP 115, HDP122, PHIL 148, PHIL 163, PSYCH 104, PSYCH 155, SOCI 104Q, SOCI 108, SOCI 113, USP144, USP145, USP147, ECON 125, ECON 142, ECON 143

FPMU40: Intro to Public Health



FPMU40: Intro to Public Health

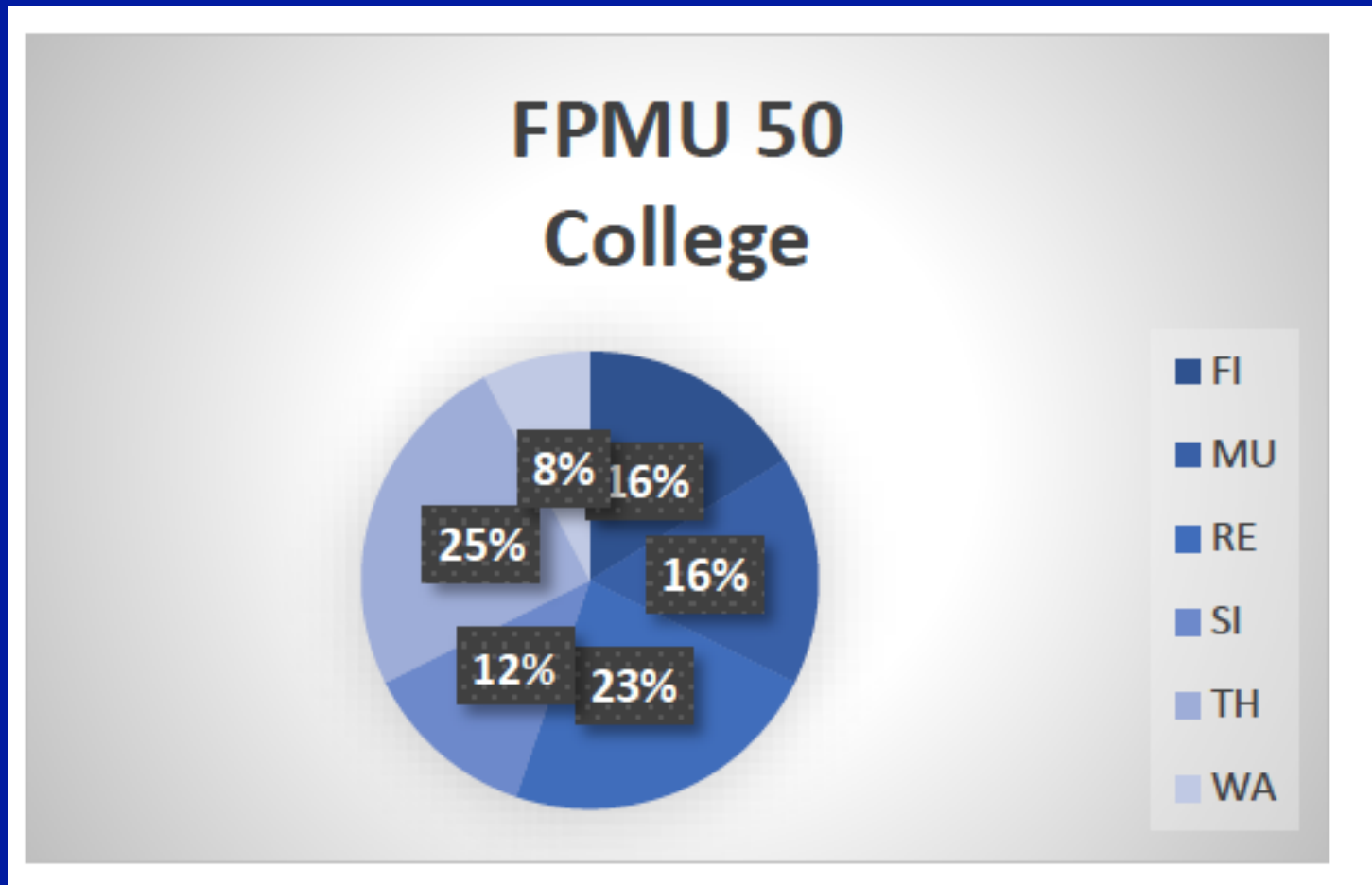


FPMU40: Intro to Public Health

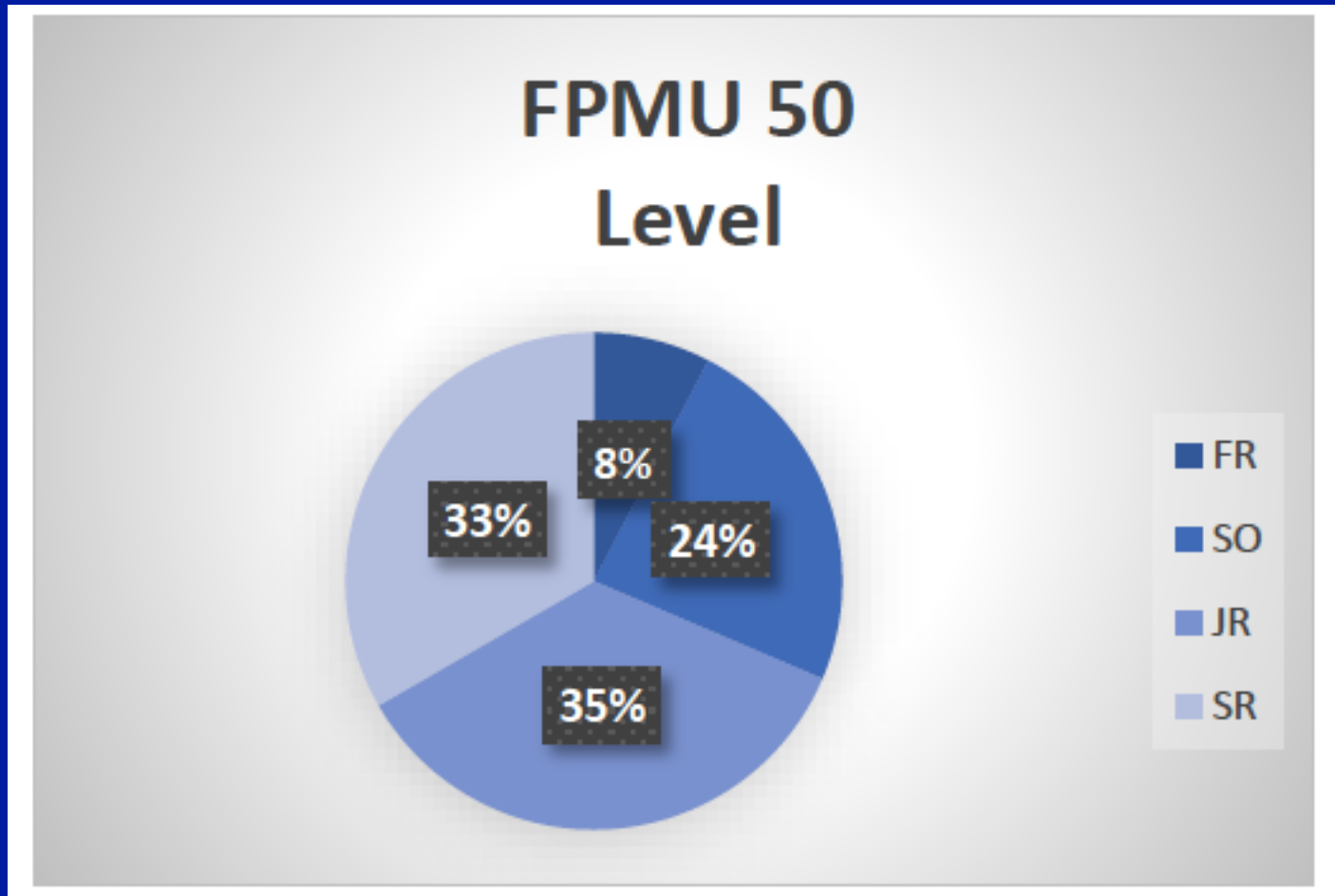
FPMU 40	
FP25	74
BI29-BI36	41
PC26	8
Singularity	8
HD01-HD25	4
UN	3
CM26	2
CG25-CG29	2
Engineering	1

Major Key	
BI29 - BI36	Biology
CG25-CG29	Cognitive Science
CH25-CH35	Chemistry & Biochemistry
CM26	Communication
FP25	Public Health
HD01-HD25	Human Development
PC26	Psychology
Singularity	Major only represented once; see raw data
UN	Undeclared

FPMU50: Primary Care in Public Health



FPMU50: Primary Care in Public Health



FPMU50: Primary Care in Public Health

FPMU 50	
FP25	53
BI29 - BI36	29
PC26	10
HD01 - HD25	3
CH25 - CH35	3
CG25-CG29	2
Singularity	2
UN	2
Engineering	1

Major Key	
BI29 - BI36	Biology
CG25-CG29	Cognitive Science
CH25-CH35	Chemistry & Biochemistry
CM26	Communication
FP25	Public Health
HD01-HD25	Human Development
PC26	Psychology
Singularity	Major only represented once; see raw data
UN	Undeclared

Summary

- Student-centered program
- Expand internship offerings
- Growth welcome
- Fulfilling experience



Questions?

